

Summerside



WATER SYSTEM REPORT

2012

Prepared By

Municipal Services - City of Summerside

Contents

Introduction	3
Summary.....	3
Bacteria Testing Results.....	4
Chemistry Analysis	5
Chlorination of Water System.....	5
Statistic Summary.....	6
Reinstatement of S8 – Heritage Court Well.....	6
Conclusion.....	8
Suggested Reading Material	9

Water System Report
January – December, 2012
City of Summerside, Prince Edward Island
Department of Municipal Services

Introduction

The City of Summerside began sampling and testing drinking water on a bi-weekly basis in the 1960’s. In 2001 Summerside established the present policy for water sampling. This policy ensures that the drinking water quality in Summerside is maintained according to the standards set out in the Guidelines for Canadian Drinking Water Quality. In unique situations which are not addressed by these Guidelines, the City is committed to follow the guidance of the PEI Chief Health Officer. This report fulfills the City’s regulated requirement for summarizing system water quality on an annual basis and is intended to be public information.

Summary

City officials have divided the water distribution system into 8 representative areas. Water samples (one from each area as well as one from each active well) are collected and analyzed for bacteria every two weeks. The number of sample locations and frequency of sampling was determined in accordance with the Guidelines for Canadian Drinking Water Quality. **Table 1** lists below the most commonly used sample locations for 2012.

Sample Location	Civic Address (Summerside, P.E.I.)	City Sampling Zone
St. Eleanor’s Community Center	1 West Drive	1
Pope Road Variety Store	148 Pope Road	2
Granville Street Gas and Convenience	486 Granville Street	3
Lions Club Senior’s Residence	326 Brophy Avenue	4
Summerside Fire Hall #1	251 Foundry Street	6
Circle K Convenience Store	96 Water Street	6
Ben’s Bakery Outlet Store	686 Water Street East	7
Read’s Corner Tim Horton’s	820 Water Street East	8
City Water Source Location		
S1 Well	411 Northmarket Street	6
S7 Well	123 Walker Avenue	3
S10 Well	277 Greenwood Drive	8
SE4 Well	26 Briggs Street	1
Wilmot Well Field (5 wells)	855 Read Drive	2

Table 1: Water Sample Locations

The sampling zones listed in Table 1 are shown below in **Figure 1: Summerside Water Sample Areas**. These 8 sampling zones were selected according to the EPA Drinking Water and Wastewater Facility Operating Regulations. If any of the regular sampling locations are inaccessible to City staff on a scheduled sampling day, an alternate location from the same zone is sampled as a substitute.

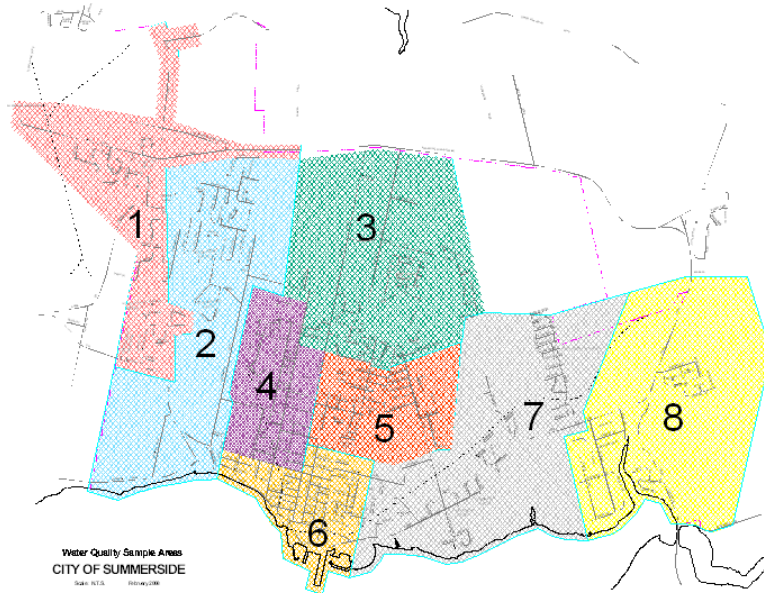


Figure 1: Summerside Water Sample Areas

Following collection, all water samples are sent to the Provincial Department of Environment Analytical Laboratory in Charlottetown. Each sample is tested for Total Coliforms DC and Escherichia Coli DC (E. Coli). In addition to the bacteria tests which are performed at the Provincial lab, the Free Chlorine Residual is analyzed and recorded by City Staff at the time of sample collection, as required by section 11(1)(e) of the Drinking Water and Wastewater Facility Operating Regulations.

Bacteria Testing Results

During the 2012 year 345 water samples from the Summerside distribution system and wells were tested for Bacteria at the P.E.I. Analytical Laboratory. Of these 333 samples were taken from the public drinking water system as regular testing. The remaining 12 samples were taken because of requests from customers for testing services. 100% of samples taken for customer requests passed the requirements for the Guidelines for Canadian Drinking Water.

During 2012 there were 10 samples which showed non-zero bacteria counts. Of these 10 all did show 0 Bacteria count for all types upon a re-test of water from the same location. Since none of the bacteria counts were of the E Coli type and all samples showed an acceptable level of chlorination, no boil orders were needed.

Chemistry Analysis

The EPA Drinking Water and Wastewater Facility Operating Regulations require all active wells to be subject to chemical analysis. A general chemical analysis of each well must be performed annually and a detailed analysis every three years. All water chemistry analysis for Summerside is performed at the Provincial Analytical Laboratory. The Guidelines for Canadian Drinking Water Quality set a Maximum Allowable Concentration (MAC) for various chemical contents of drinking water.

City of Summerside drew samples from each active well on October 2, 2012 for general chemical analysis. The results showed that all active wells were within the Guidelines for Canadian Drinking Water Quality. In addition to the well testing, a total of 7 other samples were tested throughout the year for general chemistry with 100% of results being within the Guidelines for Canadian Drinking Water Quality Set Out by Health Canada.

Summerside performs detailed chemical analysis on wells on a 3 year rotation as required by the province. These detailed chemical analysis were performed in 2011 and are due to be performed again in 2014.

During 2012 City of Summerside staff collected 83 samples for nitrate analysis. The Guidelines for Canadian Drinking Water Quality set 10 mg/L as the Maximum Allowable Concentration for Nitrates. All samples taken during 2012 from the Summerside system were within the allowable limits. The lowest Nitrate value measured for 2012 was 2.4 parts per million (ppm) and the highest value measured was 8.2 ppm.

Chlorination of Water System

Drinking water in the Summerside system is subject to only 1 type of treatment. Chlorine (as hypochlorite) is applied at each well. The goal of chlorination is to maintain a Free Chlorine Residual of at least 0.1 mg/L or higher at all points in the system at all times. This level of chlorination is the industry minimum standard for drinking water disinfection and is recommended by the Guidelines for Canadian Drinking Water Quality.

City Staff evaluate the free chlorine residual of each water sample used for bacteria testing. This means that on average 12 free chlorine residual tests are performed at the same locations as bacteria tests on a biweekly basis. Chlorine Residuals are also tested at each well 3 or 4 times

per week. During 2012 the lowest chlorine level measured was 0.19 mg/L and the highest was 0.89 mg/L. Therefore, all chlorine residuals were within acceptable levels.

Statistic Summary

Statistic	Value for 2012
Samples Tested for Bacteria	345
Bacteria Tests done at Customer Request	12 (100% pass rate)
Bacteria Tests with non-zero results	10
Bacteria Test Re-sample with 0 Bacteria Counts	10 (100% pass rate)
Nitrate Samples Tested	83 (100% pass rate)
General Chemistry Tests	15
Highest Nitrate Concentration	8.2 ppm (10ppm allowable maximum)
Lowest Nitrate Concentration	2.4 ppm
Sampling Areas	8
Number of Active Wells in System	10
Number of Wells which passed Guidelines for Canadian Drinking Water Quality	9 (100% pass rate)
Highest Chlorine Residual Measured	0.89 mg/L
Lowest Chlorine Residual Measured	0.19 mg/L (0.1 minimum recommended)
Total Volume of Water Supplied Yearly	2,053,114 m ³
Peak Monthly Supply	July – 193,692 m ³
Minimum Monthly Supply	September – 125,346 m ³
Annual Daily Average Supply	5607 m ³

Table 2: Statistic Summary for Summerside 2012

Table 2 summarizes statistics for the Summerside water system for 2012. Please note that 3 spreadsheets of test results (Bacteria testing, Nitrate monitoring, and General Chemistry) are available on the City website. For help understanding results please feel free to contact the City.

Reinstatement of S8 – Heritage Court Well

During 2012 Municipal Services staff completed an upgrade of the Heritage Court Well S8 which had previously been unused for more than 10 years. Some basic facts on this well:

- 3 phase, 200 Amp, 208 Volt electrical service to site
- Onsite Chlorination system with duplex pumping installation and safety lockout switch
- New submersible pump capable of delivering 23 Litres per second of water against 71 pounds per square inch of system pressure

- Pumping rate was verified by a licensed Well Driller during a 24 hour drawdown test
- Other upgrades included installation of new swing check valve and new water meter
- Well intended for operation 365 days per year
- Connected to main SCADA system (see Figure 2 below) with real time monitoring of
 - Flow
 - Pressure
 - Well level
 - Chlorinator Status
 - Pump Status
 - Adjustable start and stop points based on either water tower level or localized system pressure
- After upgrade work well passed water testing with PEI Department of Environment PRIOR to connection to the Summerside system

City Staff are pleased to have reinforced the reliability of our Water System with the reinstatement of this significantly large well.

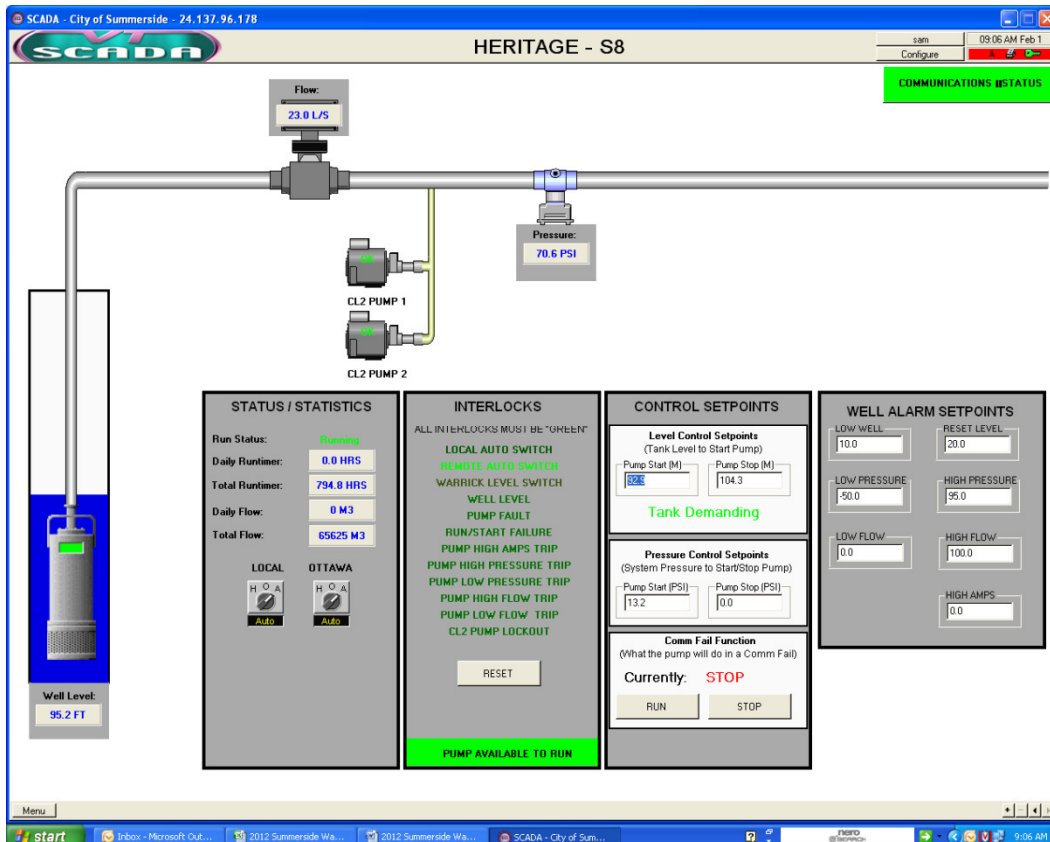


Figure 2: SCADA Screen Capture for S8 Well in Typical Operation

Conclusion

The City of Summerside Municipal Works department continues to operate and maintain a safe water utility, delivering water which meets the Canadian Drinking Water Guidelines as set out by Health Canada. The public are welcome to contact the Municipal Services Director at 902-432-1272 with any questions.

Suggested Reading Material

1. Bacterial Drinking Water Analysis

This brochure was prepared by the PEI Department of Environment and explains how water samples are tested for bacteria on PEI. The handout also explains what types of bacteria are tested for and what the test results mean. <http://www.gov.pe.ca/photos/original/watertest.pdf>

2. Guidelines for Canadian Drinking Water Quality (Health Canada)

This detailed document lists the Maximum Allowable Concentration of numerous components which we test our water for.

<http://www.hc-sc.gc.ca/ewh-semt/water-eau/drink-potab/guide/index-eng.php>

Summerside

Free Chlorine Residual - Should be a minimum of 0.1 at all locations at all times

E. Coli. Bacteria Colony Count - required to be 0. If non-zero count is present water is deemed unfit for human consumption.

Total Coliforms Bacteria Colony Count - If 10 or less bacteria is present but not sufficient to regard water unfit for drinking. Water must be re-tested.

Background Growth Bacteria Colony Count - Must be below 200 at all times

Sample ID	Location	Date	Address	City Sample Zone	Free Chlorine Residual	Total Coliforms	E. Coli.	Background Growth
P120103015	St. Eleanor's Community Center	January-3-2012	1 West Drive	1	0.53	0	0	0
P120103016	Illsley's Feed Store	January-3-2012	61 Mill Cr.	2	0.47	0	0	0
P120103017	Granville Gas and Convenience Center	January-3-2012	486 Granville Street	3	0.31	0	0	0
P120103018	Wedgewood Manor	January-3-2012	310 Brophy Street	4	0.41	0	0	0
P120103019	Summerside Firehall 1	January-3-2012	251 Foundry Street	6	0.26	0	0	0
P120103020	Circle K Water St	January-3-2012	96 Water Street	6	0.38	0	0	0
P120103021	Bens Bakery Outlet Store	January-3-2012	686 Water Street East	7	0.37	0	0	0
P120103022	Tim Hortons Esso	January-3-2012	820 Water Street East	8	0.41	0	0	0
P120103024	S1 Well	January-3-2012	411 Northmarket St	6	0.51	0	0	0
P120103023	S7 Well	January-3-2012	123 Walker Avenue	3	0.71	0	0	0
P120103026	S10 Well	January-3-2012	277 Greenwood Dr	2	0.39	0	0	0
P120103027	SE4 Well	January-3-2012	26 Briggs St	1	0.44	0	0	0
P120103025	Wilmot Wellfield Gallery	January-3-2012	855 Read Drive	8	0.59	0	0	0
P120117034	St. Eleanor's Community Center	January-17-2012	1 West Drive	1	0.34	0	0	0
P120117035	Illsley's Feed Store	January-17-2012	61 Mill Cr.	2	0.30	0	0	0
P120117036	Granville Gas and Convenience Center	January-17-2012	486 Granville Street	3	0.41	0	0	0
P120117037	Lions Club Senior Housing	January-17-2012	326 Brophy Street	4	0.33	0	0	0
P120117038	Summerside Firehall 1	January-17-2012	251 Foundry Street	6	0.37	0	0	0
P120117039	Circle K Water St	January-17-2012	96 Water Street	6	0.54	0	0	0
P120117040	Bens Bakery Outlet Store	January-17-2012	686 Water Street East	7	0.46	0	0	0
P120117041	Tim Hortons Esso	January-17-2012	820 Water Street East	8	0.53	0	0	0
P120117043	S1 Well	January-17-2012	411 Northmarket St	6	0.77	0	0	0
P120117042	S7 Well	January-17-2012	123 Walker Avenue	3	0.77	0	0	0
P120117045	S10 Well	January-17-2012	277 Greenwood Dr	2	0.44	0	0	0
P120117044	Wilmot Wellfield Gallery	January-17-2012	855 Read Drive	8	0.61	0	0	0

P120131042	St. Eleanor's Community Center	January-31-2012	1 West Drive	1	0.40	0	0	0
P120131043	Illsley's Feed Store	January-31-2012	148 Pope Road	2	0.51	0	0	0
P120131041	Granville Gas and Convenience Center	January-31-2012	486 Granville Street	3	0.42	0	0	0
P120131040	Lions Club Seniors Apartments	January-31-2012	326 Brophy Street	4	0.30	0	0	0
P120131039	Summerside Firehall 1	January-31-2012	251 Foundry Street	6	0.35	0	0	0
P120131038	Circle K Water St	January-31-2012	96 Water Street	6	0.30	0	0	0
P120131037	Bens Bakery Outlet Store	January-31-2012	686 Water Street East	7	0.50	0	0	0
P120131036	Tim Hortons Esso	January-31-2012	820 Water Street East	8	0.43	0	0	0
P120131034	S1 Well	January-31-2012	411 Northmarket St	6	0.63	0	0	0
P120131035	S7 Well	January-31-2012	123 Walker Avenue	3	0.71	0	0	0
P120131032	S10 Well	January-31-2012	277 Greenwood Drive	2	0.40	0	0	0
P120131033	Wilmot Wellfield Gallery	January-31-2012	855 Read Drive	8	0.66	0	0	0
P120215053	St. Eleanor's Community Center	Feb-15-2012	1 West Drive	1	0.35	0	0	0
P120215052	Pope Road Variety	Feb-15-2012	148 Pope Road	2	0.38	0	0	0
P120215051	Granville Gas and Convenience Center	Feb-15-2012	486 Granville Street	3	0.40	0	0	0
P120215050	Lions Club Seniors Apartments	Feb-15-2012	326 Brophy Street	4	0.31	0	0	0
P120215049	Summerside Firehall 1	Feb-15-2012	251 Foundry Street	6	0.27	0	0	0
P120215048	Circle K Water St	Feb-15-2012	96 Water Street	6	0.33	0	0	0
P120215047	Bens Bakery Outlet Store	Feb-15-2012	686 Water Street East	7	0.46	0	0	0
P120215046	Tim Hortons Esso	Feb-15-2012	820 Water Street East	8	0.52	0	0	0
P120215044	S1 Well	Feb-15-2012	411 Northmarket St	6	0.58	0	0	0
P120215045	S7 Well	Feb-15-2012	123 Walker Avenue	3	0.67	0	0	0
P120215042	S10 Well	Feb-15-2012	277 Greenwood Drive	2	0.54	0	0	0
P120215041	SE4 Well	Feb-15-2012	26 Briggs Street	1	0.61	0	0	0
P120215043	Wilmot Wellfield Gallery	Feb-15-2012	855 Read Drive	8	0.66	0	0	0
P120227019	St. Eleanor's Community Center	Feb-27-2012	1 West Drive	1	0.41	0	0	0
P120227018	Private Residence	Feb-27-2012	83 MacDonald Cr	1	0.57	0	0	0
P120227017	Granville Gas and Convenience Center	Feb-27-2012	486 Granville Street	3	0.33	0	0	0
P120227016	Lions Club Seniors Apartments	Feb-27-2012	326 Brophy Street	4	0.32	0	0	0
P120227015	Summerside Firehall 1	Feb-27-2012	251 Foundry Street	6	0.29	0	0	0
P120227014	Circle K Water St	Feb-27-2012	96 Water Street	6	0.36	0	0	0
P120227013	Bens Bakery Outlet Store	Feb-27-2012	686 Water Street East	7	0.41	0	0	0
P120227012	Tim Hortons Esso	Feb-27-2012	820 Water Street East	8	0.39	0	0	0
P120227010	S1 Well	Feb-27-2012	411 Northmarket St	6	0.63	0	0	0
P120227011	S7 Well	Feb-27-2012	123 Walker Avenue	3	0.68	0	0	0
P120227008	S10 Well	Feb-27-2012	277 Greenwood Drive	2	0.47	0	0	0
P120227007	SE4 Well	Feb-27-2012	26 Briggs Street	1	0.61	0	0	0
P120227009	Wilmot Wellfield Gallery	Feb-27-2012	855 Read Drive	8	0.60	0	0	0
P120313044	St. Eleanor's Community Center	March-13-2012	1 West Drive	1	0.64	0	0	0
P120313043	Illsley's Feeds Store	March-13-2012	61 Mill Cr	2	0.49	0	0	0
P120313042	Granville Gas and Convenience Center	March-13-2012	486 Granville Street	3	0.73	0	0	0

P120313041	Lions Club Seniors Appartments	March-13-2012	326 Brophy Street	4	0.44	0	0	0
P120313040	Summerside Firehall 1	March-13-2012	251 Foundry Street	6	0.23	0	0	0
P120313039	Circle K Water St	March-13-2012	96 Water Street	6	0.46	0	0	0
P120313038	Bens Bakery Outlet Store	March-13-2012	686 Water Street East	7	0.36	0	0	0
P120313037	Tim Hortons Esso	March-13-2012	820 Water Street East	8	0.48	0	0	0
P120313035	S1 Well	March-13-2012	411 Northmarket St	6	0.36	0	0	0
P120313036	S7 Well	March-13-2012	123 Walker Avenue	3	0.82	0	0	0
P120313033	S10 Well	March-13-2012	277 Greenwood Dr	2	0.66	0	0	0
P120313032	SE4 Well	March-13-2012	26 Briggs St	1	0.61	0	0	0
P120313034	Wilmot Wellfield Gallery	March-13-2012	855 Read Drive	8	0.58	0	0	0
P120329057	St. Eleanor's Community Center	March-29-2012	1 West Drive	1	0.62	0	0	0
P120329056	Illsley's Feeds Store	March-29-2012	148 Pope Road	2	0.59	0	0	0
P120329055	Granville Gas and Convinience Center	March-29-2012	486 Granville Street	3	0.41	0	0	0
P120329054	Lions Club Seniors Appartments	March-29-2012	326 Brophy Street	4	0.48	0	0	0
P120329053	Summerside Firehall 1	March-29-2012	251 Foundry Street	6	0.3	0	0	0
P120329052	Circle K Water St	March-29-2012	96 Water Street	6	0.46	0	0	0
P120329051	Bens Bakery Outlet Store	March-29-2012	686 Water Street East	7	0.27	0	0	0
P120329050	Tim Hortons Esso	March-29-2012	820 Water Street East	8	0.40	0	0	0
P120329048	S1 Well	March-29-2012	411 Northmarket St	6	0.68	0	0	0
P120329049	S7 Well	March-29-2012	123 Walker Avenue	3	0.86	0	0	0
P120329046	S10 Well	March-29-2012	277 Greenwood Dr	2	0.41	0	0	0
P120329045	SE4 Well	March-29-2012	26 Briggs Street	1	0.68	0	0	0
P120329047	Wilmot Wellfield Gallery	March-29-2012	855 Read Drive	8	0.69	0	0	0
P120411047	St. Eleanor's Community Center	April-11-2012	1 West Drive	1	0.52	0	0	0
P120411046	Illsleys Feed Store	April-11-2012	61 Mill Crescent	2	0.48	0	0	0
P120411045	Granville Gas and Convinience Center	April-11-2012	486 Granville Street	3	0.46	0	0	0
P120411044	Lions Club Seniors Appartments	April-11-2012	326 Brophy Street	4	0.47	0	0	0
P120411043	Summerside Firehall 1	April-11-2012	251 Foundry Street	6	0.36	0	0	0
P120411042	Circle K Water St	April-11-2012	96 Water Street	6	0.49	0	0	0
P120411041	Bens Bakery Outlet Store	April-11-2012	686 Water Street East	7	0.44	0	0	0
P120411040	Tim Hortons Esso	April-11-2012	820 Water Street East	8	0.53	0	0	0
P120411038	S1 Well	April-11-2012	411 Northmarket St	6	0.71	0	0	0
P120411039	S7 Well	April-11-2012	123 Walker Avenue	3	0.66	0	0	0
P120411036	S10 Well	April-11-2012	277 Greenwood Drive	2	0.58	0	0	0
P120411035	SE4 Well	April-11-2012	26 Briggs Street	1	0.70	0	0	0
P120411037	Wilmot Wellfield Gallery	April-11-2012	855 Read Drive	8	0.68	0	0	0
P120501046	St. Eleanor's Community Center	May-1-2012	1 West Drive	1	0.65	0	0	0
P120501047	Pope Road Variety	May-1-2012	148 Pope Road	2	0.53	0	0	0
P120501048	Granville Gas and Convinience Center	May-1-2012	486 Granville Street	3	0.45	0	0	0
P120501049	Lions Club Seniors Appartments	May-1-2012	326 Brophy Street	4	0.58	0	0	0
P120501050	Summerside Fire Station 1	May-1-2012	251 Foundry Street	6	0.34	0	0	0
P120501051	Circle K Water St	May-1-2012	96 Water Street	6	0.36	0	0	0

P120501052	Bens Bakery Outlet Store	May-1-2012	686 Water Street East	7	0.43	0	0	0
P120501053	Tim Hortons Esso	May-1-2012	820 Water Street East	8	0.56	0	0	0
P120501059	Arsenaults Fish Mart	May-1-2012	246 Harbour Dr	6	0.27	0	0	0
P120501060	JMK Fish Mart	May-1-2012	110 Queens Warf	6	0.22	0	0	0
P120501055	S1 Well	May-1-2012	411 Northmarket St	6	0.89	0	0	0
P120501054	S7 Well	May-1-2012	123 Walker Avenue	3	0.80	0	0	0
P120501057	S10 Well	May-1-2012	277 Greenwood Drive	2	0.62	0	0	0
P120501058	SE4 Well	May-1-2012	26 Briggs Street	1	0.73	0	0	0
P120501056	Wilmot Wellfield Gallery	May-1-2012	855 Read Drive	8	0.56	0	0	0
P120509091	St. Eleanor's Community Center	May-9-2012	1 West Drive	1	0.46	0	0	0
P120509090	Ilisley's Feed Store	May-9-2012	61 Mill Cres	2	0.47	0	0	0
P120509089	Granville Gas and Convinience Center	May-9-2012	486 Granville Street	3	0.61	0	0	0
P120509088	Lions Club Seniors Appartments	May-9-2012	326 Brophy Street	4	0.36	0	0	0
P120509087	Summerside Fire Station 1	May-9-2012	251 Foundry Street	6	0.32	0	0	0
P120509086	Circle K Water St	May-9-2012	96 Water Street	6	0.35	0	0	0
P120509085	Bens Bakery Outlet Store	May-9-2012	686 Water Street East	7	0.42	0	0	0
P120509084	Tim Hortons Esso	May-9-2012	820 Water Street East	8	0.52	0	0	0
P120509082	S1 Well	May-9-2012	411 Northmarket Street	6	0.71	0	0	0
P120509083	S7 Well	May-9-2012	123 Walker Avenue	3	0.60	0	0	0
P120509080	S10 Well	May-9-2012	277 Greenwood Drive	2	0.50	0	0	0
P120509079	SE4 Well	May-9-2012	26 Briggs Street	1	0.65	0	0	0
P120509081	Wilmot Wellfield Gallery	May-9-2012	855 Read Drive	8	0.52	0	0	0
P120517090	St. Eleanor's Community Center	May-17-2012	1 West Drive	1	0.58	15	0	0
P120517089	Ilisley's Feed Store	May-17-2012	61 Mill Crescent	2	0.47	0	0	0
P120517088	Granville Gas and Convinience Center	May-17-2012	486 Granville Street	3	0.46	0	0	0
P120517087	Lions Club Seniors Appartments	May-17-2012	326 Brophy Street	4	0.47	0	0	0
P120517086	Summerside Fire Station 1	May-17-2012	251 Foundry Street	6	0.34	0	0	3
P120517085	Circle K Water St	May-17-2012	96 Water Street	6	0.31	0	0	0
P120517084	Bens Bakery Outlet Store	May-17-2012	686 Water Street East	7	0.47	0	0	0
P120517083	Tim Hortons Esso	May-17-2012	820 Water Street East	8	0.48	0	0	0
P120517081	S1 Well	May-17-2012	411 Northmarket Street	6	0.82	0	0	0
P120517082	S7 Well	May-17-2012	123 Walker Avenue	3	0.87	0	0	0
P120517079	SE4 Well	May-17-2012	26 Briggs Street	1	0.74	0	0	0
P120517080	Wilmot Wellfield Gallery	May-17-2012	855 Read Drive	8	0.58	0	0	0
P120606098	St. Eleanor's Community Center	June-6-2012	1 West Drive	1	0.81	0	0	0
P120606085	St. E CC second sink tested	June-6-2012	1 West Drive	1	0.79	0	0	0
P120606086	Ilisley's Feed Store	June-6-2012	61 Mill Crescent	2	0.54	0	0	0
P120606087	Granville Gas and Convinience Center	June-6-2012	486 Granville Street	3	0.65	0	0	0
P120606088	Lions Club Seniors Appartments	June-6-2012	326 Brophy Street	4	0.47	0	0	0
P120606089	Summerside Fire Station 1	June-6-2012	251 Foundry	6	0.41	0	0	0
P120606090	Circle K Water St	June-6-2012	96 Water Street	6	0.33	0	0	0
P120606091	Bens Bakery Outlet Store	June-6-2012	686 Water Street East	7	0.46	0	0	0

P120606092	Tim Hortons Esso	June-6-2012	820 Water Street East	8	0.58	0	0	0
P120606094	S1 Well	June-6-2012	411 Northmarket St	6	0.88	0	0	0
P120606093	S7 Well	June-6-2012	123 Walker Avenue	3	0.88	0	0	0
P120606096	S10 Well	June-6-2012	277 Greenwood Drive	2	0.66	0	0	0
P120606097	SE4 Well	June-6-2012	26 Briggs Street	1	0.76	0	0	0
P120606095	Wilmot Wellfield Gallery	June-6-2012	855 Read Drive	8	0.61	0	0	0
P120625052	St. Eleanor's Community Center	June-25-2012	1 West Drive	1	0.48	0	0	0
P120625051	Illsley's Feed Store	June-25-2012	148 Pope Road	2	0.73	0	0	0
P120625050	Granville Gas and Convenience Center	June-25-2012	486 Granville Street	3	0.40	0	0	0
P120625049	Lions Club Seniors Appartments	June-25-2012	326 Brophy Street	4	0.59	0	0	0
P120625048	Summerside Fire Station 1	June-25-2012	251 Foundry	6	0.29	0	0	0
P120625047	Circle K Water St	June-25-2012	96 Water Street	6	0.43	0	0	1
P120625046	Bens Bakery Outlet Store	June-25-2012	686 Water Street East	7	0.43	0	0	0
P120625045	Tim Hortons Esso	June-25-2012	820 Water Street East	8	0.54	0	0	0
P120625043	S1 Well	June-25-2012	411 Northmarket St	6	0.75	0	0	0
P120625044	S7 Well	June-25-2012	123 Walker Avenue	3	0.62	0	0	0
P120625041	S10 Well	June-25-2012	277 Greenwood Drive	2	0.61	0	0	0
P120625040	SE4 Well	June-25-2012	26 Briggs Street	1	0.67	0	0	0
P120625042	Wilmot Wellfield Gallery	June-25-2012	855 Read Drive	8	0.63	0	0	0
P120705077	St. Eleanor's Community Center	July-5-2012	1 West Drive	1	0.87	0	0	0
P120705076	Illsley's Feed Store	July-5-2012	61 Mill cr	2	0.50	0	0	0
P120705075	Granville Gas and Convenience Center	July-5-2012	486 Granville Street	3	0.66	0	0	0
P120705074	Lions Club Seniors Appartments	July-5-2012	326 Brophy Street	4	0.56	0	0	0
P120705073	Summerside Fire Station 1	July-5-2012	251 Foundry	6	0.33	0	0	0
P120705072	Circle K Water St	July-5-2012	96 Water Street	6	0.42	0	0	0
P120705071	Bens Bakery Outlet Store	July-5-2012	686 Water Street East	7	0.44	0	0	0
P120705070	Tim Hortons Esso	July-5-2012	820 Water Street East	8	0.46	0	0	0
P120705068	S1 Well	July-5-2012	411 Northmarket St	6	0.78	0	0	0
P120705069	S7 Well	July-5-2012	123 Walker Avenue	3	0.76	0	0	0
P120705066	S10 Well	July-5-2012	277 Greenwood Drive	2	0.65	0	0	0
P120705065	SE4 Well	July-5-2012	26 Briggs Street	1	0.69	0	0	0
P120705067	Wilmot Wellfield Gallery	July-5-2012	855 Read Drive	8	0.51	0	0	0
P120718078	St. Eleanor's Community Center	July-18-2012	1 West Drive	1	0.68	0	0	0
P120718079	Pope Road Variety	July-18-2012	148 Pope Road	2	0.68	0	0	0
P120718080	Granville Gas and Convenience Center	July-18-2012	486 Granville Street	3	0.70	0	0	0
P120718081	Lions Club Seniors Appartments	July-18-2012	326 Brophy Street	4	0.59	0	0	0
P120718082	Summerside Fire Station 1	July-18-2012	251 Foundry	6	0.35	0	0	0
P120718083	Circle K Water St	July-18-2012	96 Water Street	6	0.35	0	0	0
P120718084	Bens Bakery Outlet Store	July-18-2012	686 Water Street East	7	0.41	0	0	0
P120718085	Tim Hortons Esso	July-18-2012	820 Water Street East	8	0.52	0	0	0
P120718086	S7 Well	July-18-2012	123 Walker Ave	3	0.59	0	0	0
P120718088	S10 Well	July-18-2012	277 Greenwood Drive	2	0.62	0	0	0

P120718089	SE4 Well	July-18-2012	26 Briggs Street	1	0.73	0	0	0
P120718087	Wilmot Wellfield Gallery	July-18-2012	855 Read Drive	8	0.52	0	0	0
P120731091	St. Eleanor's Community Center	July-31-2012	1 West Drive	1	0.67	0	0	0
P120731092	Illsley's Feed Store	July-31-2012	61 Mill Cr	2	0.65	0	0	0
P120731094	Granville Gas and Convinience Center	July-31-2012	486 Granville Street	3	0.66	0	0	0
P120731096	Lions Club Seniors Appartments	July-31-2012	326 Brophy Street	4	0.64	0	0	0
P120731097	Summerside Fire Station 1	July-31-2012	251 Foundry	6	0.38	0	0	0
P120731098	Circle K Water St	July-31-2012	96 Water Street	6	0.41	0	0	1
P120731099	Bens Bakery Outlet Store	July-31-2012	686 Water Street East	7	0.40	0	0	0
P120731100	Tim Hortons Esso	July-31-2012	820 Water Street East	8	0.48	0	0	0
P120731095	S7 Well	July-31-2012	123 Walker Ave	3	0.69	0	0	0
P120731093	S10 Well	July-31-2012	277 Greenwood Drive	2	0.89	0	0	0
P120731090	SE4 Well	July-31-2012	26 Briggs Street	1	0.65	0	0	0
P120731101	Wilmot Wellfield Gallery	July-31-2012	855 Read Drive	8	0.56	0	0	0
P120821090	St. Eleanor's Community Center	August-21-2012	1 West Drive	1	0.56	0	0	0
P120821089	Illsley's Feed Store	August-21-2012	61 Mill Cr	2	0.54	0	0	0
P120821088	Granville Gas and Convinience Center	August-21-2012	486 Granville Street	3	0.65	1	0	0
P120821087	Lions Club Seniors Appartments	August-21-2012	326 Brophy Street	4	0.65	0	0	0
P120821086	Summerside Fire Station 1	August-21-2012	251 Foundry	6	0.46	0	0	0
P120821085	Circle K Water St	August-21-2012	96 Water Street	6	0.42	0	0	0
P120821084	Bens Bakery Outlet Store	August-21-2012	686 Water Street East	7	0.38	0	0	0
P120821083	Tim Hortons Esso	August-21-2012	820 Water Street East	8	0.42	0	0	0
P120821082	S7 Well	August-21-2012	123 Walker Ave	3	0.80	0	0	0
P120821080	S10 Well	August-21-2012	277 Greenwood Drive	2	0.54	0	0	0
P120821079	SE4 Well	August-21-2012	26 Briggs Street	1	0.74	0	0	0
P120821081	Wilmot Wellfield Gallery	August-21-2012	855 Read Drive	8	0.45	0	0	0
P120827031	Credit Union Place Filter Room	August-27-2012	511 Notre Dame Street	4	0.32	0	0	0
P120827032	Credit Union Place Lobby Fountain	August-27-2012	511 Notre Dame Street	4	0.40	0	0	0
P120827033	Credit Union Place Gym Fountain	August-27-2012	511 Notre Dame Street	4	0.44	0	0	0
P120827034	S10 Well	August-27-2012	277 Greenwood Drive	2	0.58	0	0	0
P120827038	Summerside Fire Station 1	August-27-2012	251 Foundry Street	6	0.32	0	0	0
P120904064	St. Eleanor's Community Center	September-4-2012	1 West Drive	1	0.58	0	0	0
P120904063	Illsley's Feed Store	September-4-2012	61 Mill Cr.	2	0.60	0	0	0
P120904062	Granville Gas and Convinience Center	September-4-2012	486 Granville st	3	0.61	0	0	0
P120904061	Lions Club Seniors Appartments	September-4-2012	326 Brophy Street	4	0.60	0	0	0
P120904051	Private Residence	September-4-2012	390 Brophy Street	4	0.58	0	0	0
P120904059	Circle K Water Street	September-4-2012	96 Water Street	6	0.58	0	0	0
P120904057	Tim Hortons Esso	September-4-2012	820 Water Street East	8	0.52	0	0	0
P120904056	S7 Well	September-4-2012	123 Walker Ave	3	0.56	0	0	0
P120904053	S10 Well	September-4-2012	277 Greenwood Drive	2	0.61	0	0	0
P120904052	SE4 Well	September-4-2012	26 Briggs St	1	0.64	0	0	0

P120904060	Summerside Fire Station 1	September-4-2012	251 Foundry Street	6	0.29	0	0	0
P120904058	Bens Bakery Outlet Store	September-4-2012	686 Water Street East	7	0.44	0	0	0
P120904055	Wilmot Wellfield Gallery	September-4-2012	855 Read Drive	8	0.54	0	0	0
P120904054	Dental Professional Center	September-4-2012	388 Centrla Street	3	0.50	0	0	0
P120911076	St. Eleanor's Community Center	September-11-2012	1 West Drive	1	0.74	1	0	0
P120911075	Pope Road Variety	September-11-2012	148 Pope Road	2	0.64	0	0	0
P120911074	Granville Gas and Convinience Center	September-11-2012	486 Granville Street	3	0.46	0	0	0
P120911073	Lions Club Seniors Appartments	September-11-2012	326 Brophy Street	4	0.69	0	0	0
P120911072	Summerside Fire Station 1	September-11-2012	251 Foundry	6	0.54	0	0	3
P120911071	Circle K Water St	September-11-2012	96 Water Street	6	0.39	0	0	39
P120911070	Bens Bakery Outlet Store	September-11-2012	686 Water Street East	7	0.45	0	0	0
P120911069	Tim Hortons Esso	September-11-2012	820 Water Street East	8	0.42	0	0	0
P120911068	S7 Well	September-11-2012	123 Walker Ave	3	0.66	0	0	0
P120911066	S10 Well	September-11-2012	277 Greenwood Drive	2	0.56	0	0	0
P120911065	SE4 Well	September-11-2012	26 Briggs Street	1	0.78	0	0	0
P120911067	Wilmot Wellfield Gallery	September-11-2012	855 Read Drive	8	0.59	0	0	0
P120925052	St. Eleanor's Community Center	September-25-2012	1 West Drive	1	0.56	0	0	0
P120925051	Pope Road Variety	September-25-2012	148 Pope Road	2	0.56	0	0	0
P120925050	Granville Gas and Convinience Center	September-25-2012	486 Granville Street	3	0.47	0	0	0
P120925049	Lions Club Seniors Appartments	September-25-2012	326 Brophy Street	4	0.66	0	0	0
P120925048	Summerside Fire Station 1	September-25-2012	251 Foundry	6	0.37	0	0	0
P120925047	Circle K Water St	September-25-2012	96 Water Street	6	0.3	0	0	0
P120925046	Bens Bakery Outlet Store	September-25-2012	686 Water Street East	7	0.31	0	0	0
P120925045	Tim Hortons Esso	September-25-2012	820 Water Street East	8	0.38	0	0	0
P120925043	S1 Well	September-25-2012	411 Northmarket St	6	0.63	0	0	0
P120925044	S7 Well	September-25-2012	123 Walker Ave	3	0.54	0	0	0
P120925041	S10 Well	September-25-2012	277 Greenwood Drive	2	0.52	0	0	0
P120925040	SE4 Well	September-25-2012	26 Briggs Street	1	0.62	0	0	0
P120925042	Wilmot Wellfield Gallery	September-25-2012	855 Read Drive	8	0.64	0	0	0
P121010055	St. Eleanor's Community Center	October-10-2012	1 West Drive	1	0.69	1	0	2
P121010056	Illsley's Feed Store	October-10-2012	148 Pope Road	2	0.66	0	0	0
P121010057	Granville Gas and Convinience Center	October-10-2012	486 Granville Street	3	0.43	0	0	0
P121010058	Lions Club Seniors Appartments	October-10-2012	326 Brophy Street	4	0.60	0	0	0
P121010059	Summerside Fire Station 1	October-10-2012	251 Foundry	6	0.39	0	0	0
P121010060	Circle K Water St	October-10-2012	96 Water Street	6	0.41	0	0	2
P121010061	Bens Bakery Outlet Store	October-10-2012	686 Water Street East	7	0.46	0	0	0
P121010062	Tim Hortons Esso	October-10-2012	820 Water Street East	8	0.57	0	0	0
P121010064	S1 Well	October-10-2012	411 Northmarket St	6	0.60	0	0	0
P121010063	S7 Well	October-10-2012	123 Walker Ave	3	0.49	0	0	0
P121010066	S10 Well	October-10-2012	277 Greenwood Drive	2	0.50	0	0	0
P121010067	SE4 Well	October-10-2012	26 Briggs Street	1	0.69	0	0	0
P121010065	Wilmot Wellfield Gallery	October-10-2012	855 Read Drive	8	0.63	0	0	0

P121205062	St. Eleanor's Community Center	December-5-2012	1 West Drive	1	0.50	0	0	0
P121205061	Illsley's Feed Store	December-5-2012	61 Mill Cr	2	0.35	0	0	0
P121205060	Granville Gas and Convinience Center	December-5-2012	486 Granville Street	3	0.44	0	0	0
P121205059	Lions Club Seniors Appartments	December-5-2012	326 Brophy Street	4	0.38	0	0	0
P121205058	Summerside Fire Station 1	December-5-2012	251 Foundry	6	0.27	0	0	0
P121205057	Circle K Water St	December-5-2012	96 Water Street	6	0.44	0	0	0
P121205056	Bens Bakery Outlet Store	December-5-2012	686 Water Street East	7	0.36	0	0	0
P121205055	Tim Hortons Esso	December-5-2012	820 Water Street East	8	0.38	0	0	0
P121205053	S1 Well	December-5-2012	411 Northmarket St	6	0.43	0	0	0
P121205054	S7 Well	December-5-2012	123 Walker Ave	3	0.6	0	0	0
P121205051	S10 Well	December-5-2012	277 Greenwood Drive	2	0.43	0	0	0
P121205050	SE4 Well	December-5-2012	26 Briggs Street	1	0.85	0	0	0
P121205052	Wilmot Wellfield Gallery	December-5-2012	855 Read Drive	8	0.63	0	0	0
P121205048	Private Residence	December-5-2012	148 Pope Road	2	0.5	0	0	0
P121205047	Private Business	December-5-2012	115 Bayview	1	0.28	0	0	0
P121212041	St. Eleanor's Community Center	December-12-2012	1 West Drive	1	0.75	0	0	0
P121212042	llsley Feeds	December-12-2012	63 Mill Cr	2	0.35	0	0	0
P121212043	Granville Gas and Convinience Center	December-12-2012	486 Granville Street	3	0.55	0	0	0
P121212044	Lions Club Seniors Appartments	December-12-2012	326 Brophy Street	4	0.48	0	0	0
P121212045	Summerside Fire Station 1	December-12-2012	251 Foundry	6	0.51	0	0	0
P121212046	Circle K Water St	December-12-2012	96 Water Street	6	0.38	0	0	0
P121212047	Bens Bakery Outlet Store	December-12-2012	686 Water Street East	7	0.40	0	0	0
P121212048	Tim Hortons Esso	December-12-2012	820 Water Street East	8	0.42	0	0	0
P121212050	S1 Well	December-12-2012	411 Northmarket St	6	0.79	0	0	0
P121212049	S7 Well	December-12-2012	123 Walker Ave	3	0.58	0	0	0
P121212052	S10 Well	December-12-2012	277 Greenwood Drive	2	0.57	0	0	0
P121212053	SE4 Well	December-12-2012	26 Briggs Street	1	0.80	0	0	0
P121212054	S8 Well	December-12-2012	Rotary Park Lane	3	0.73	0	0	0
P121212051	Wilmot Wellfield Gallery	December-12-2012	855 Read Drive	8	0.57	0	0	0

Summerside

Guideline to Nitrate Analysis:

Units for Nitrate are parts per million

Nitrate Maximum Allowable Concentration is 10.0 ppm.

Sample ID	Location	Date	Address	City Sample Zone	Nitrate
P120103019	Summerside Firehall 1	Jan-3-2012	251 Foundry Street	6	4.3
P120103021	Bens Bakery Outlet Store	Jan-3-2012	686 Water Street East	7	6.4
P120103025	Wilmot Wellfield Gallery	Jan-3-2012	855 Read Drive	8	6.3
P120117038	Summerside Firehall 1	Jan-17-2012	251 Foundry Street	6	3.2
P120117040	Bens Bakery Outlet Store	Jan-17-2012	686 Water Street East	7	3.3
P120117044	Wilmot Wellfield Gallery	Jan-17-2012	855 Read Drive	8	3.5
P120131039	Summerside Firehall 1	Jan-31-2012	251 Foundry Street	6	3.2
P120131037	Bens Bakery Outlet Store	Jan-31-2012	686 Water Street East	7	3.5
P120131033	Wilmot Wellfield Gallery	Jan-31-2012	855 Read Drive	8	3.6
P120215049	Summerside City Hall	Feb-15-2012	275 Fitzroy Street	6	3.2
P120215047	Bens Bakery Outlet Store	Feb-15-2012	686 Water Street East	7	3.5
P120215043	Wilmot Wellfield Gallery	Feb-15-2012	855 Read Drive	8	3.6
P120227009	Wilmot Wellfield Gallery	Feb-27-2012	855 Read Drive	8	5.0
P120227015	Summerside Firehall 1	Feb-27-2012	251 Foundry Street	6	3.6
P120227013	Bens Bakery Outlet Store	Feb-27-2012	686 Water Street East	7	3.5
P120313040	Summerside Firehall 1	March-13-2012	251 Foundry Street	6	3.3
P120313038	Bens Bakery Outlet Store	March-13-2012	686 Water Street East	7	3.6
P120313034	Wilmot Wellfield Gallery	March-13-2012	855 Read Drive	8	4.8
P120329053	Summerside Firehall 1	March-29-2012	251 Foundry Street	6	3.5
P120329051	Bens Bakery Outlet Store	March-29-2012	686 Water Street East	7	3.7
P120329047	Wilmot Wellfield Gallery	March-29-2012	855 Read Drive	8	3.6
P120411043	Summerside Fire Station 1	April-11-2011	251 Foundry Street	6	4.0
P120411041	Bens Bakery Outlet Store	April-11-2011	686 Water Street East	7	3.6
P120411037	Wilmot Wellfield Gallery	April-11-2011	855 Read Drive	8	3.7
P120501050	Summerside Fire Station 1	May-1-2012	251 Foundry Street	6	4.4
P120501052	Bens Bakery Outlet Store	May-1-2012	686 Water Street East	7	3.8
P120501056	Wilmot Wellfield Gallery	May-1-2012	855 Read Drive	8	7.6
P120509087	Summerside Fire Station 1	May-9-2012	251 Foundry Street	6	4.0
P120509085	Bens Bakery Outlet Store	May-9-2012	686 Water Street East	7	4.1
P120519078	Private Home	May-9-2012	96 Balcolm Dr	5	6.7
P120517086	Summerside Fire Station 1	May-17-2012	251 Foundry Street	6	4.5
P120517084	Bens Bakery Outlet Store	May-17-2012	686 Water Street East	7	3.7

P120517080	Wilmot Wellfield Gallery	May-17-2012	855 Read Drive	8	6.7
P120606085	St Eleanor's Community Center	June-6-2012	1 West Drive	1	2.4
P120606089	Summerside Fire Station 1	June-6-2012	251 Foundry Street	6	4.3
P120606091	Bens Bakery Outlet Store	June-6-2012	686 Water Street East	7	3.6
P120606095	Wilmot Wellfield Gallery	June-6-2012	855 Read Drive	8	6.5
P120625042	Wilmot Wellfield Gallery	June-25-2012	855 Read Drive	8	6.6
P120625046	Bens Bakery Outlet Store	June-25-2012	686 Water Street East	7	6.1
P120625048	Summerside Fire Station 1	June-25-2012	251 Foundry Street	6	4.4
P120705071	Bens Bakery Outlet Store	July-5-2012	686 Water Street East	7	5.5
P120705073	Summerside Fire Station 1	July-5-2012	251 Foundry Street	6	4.6
P120705067	Wilmot Wellfield Gallery	July-5-2012	855 Read Drive	8	6.3
P120718084	Bens Bakery Outlet Store	July-18-2012	686 Water Street East	7	7.9
P120718082	Summerside Fire Station 1	July-18-2012	251 Foundry Street	6	4.7
P120718087	Wilmot Wellfield Gallery	July-18-2012	855 Read Drive	8	8.2
P120731101	Wilmot Wellfield Gallery	July-31-2012	855 Read Drive	8	7.8
P120731099	Bens Bakery Outlet Store	July-31-2012	686 Water Street East	7	8.0
P120731097	Summerside Fire Station 1	July-31-2012	251 Foundry Street	6	4.5
P120821081	Wilmot Wellfield Gallery	August-21-2012	855 Read Drive	8	8.1
P120821084	Bens Bakery Outlet Store	August-21-2012	686 Water Street East	7	6.5
P120821086	Summerside Fire Station 1	August-21-2012	251 Foundry Street	6	4.8
P120821078	Wilmot Well 5 no online	August-21-2012	855 Read Drive	8	7.1
P120823023	Wilmot Well 5 not online	August-22-2012	855 Read Drive	8	7.1
P120904060	Summerside Fire Station 1	Sept-4-2012	251 Foundry Street	6	4.8
P120904058	Bens Bakery Outlet Store	Sept-4-2012	686 Water Street East	7	6.5
P120904055	Wilmot Wellfield Gallery	Sept-4-2012	855 Read Drive	8	6.4
P120904054	Dental Professional Center	Sept-4-2012	388 Central Street	3	4.3
P120911067	Wilmot Wellfield Gallery	Sept-11-2012	855 Read Drive	8	5.1
P120911070	Bens Bakery Outlet Store	Sept-11-2012	686 Water Street East	7	5.1
P120911072	Summerside Fire Station 1	Sept-11-2012	251 Foundry Street	6	5.7
P120925048	Summerside Fire Station 1	Sept-25-12	251 Foundry Street	6	3.9
P120925042	Wilmot Wellfield Gallery	Sept-25-12	855 Read Drive	8	7.7
P120925046	Bens Bakery Outlet Store	Sept-25-12	686 Water Street East	7	7.2
P121010059	Summerside Fire Station 1	Oct-10-2012	251 Foundry Street	6	3.1
P121010065	Wilmot Wellfield Gallery	Oct-10-2012	855 Read Drive	8	7.7
P121010061	Bens Bakery Outlet Store	Oct-10-2012	686 Water Street East	7	7.7
P121023062	Summerside Fire Station 1	Oct-23-2012	251 Foundry Street	6	3.5
P121023060	Bens Bakery Outlet Store	Oct-23-2012	686 Water Street East	7	4.9
P121023056	Wilmot wellfield Gallery	Oct-23-2012	855 Read Drive	8	5.0.
P121106060	Summerside Fire Station 1	Nov-6-2012	251 Foundry Street	6	3.1
P121106054	Wilmot Wellfield Gallery	Nov-6-2012	855 Read Drive	8	7.6
P121106050	Parkside School Upstairs	Nov-6-2012	195 Summer St	5	5.6
P121106051	Parkside School Upstairs	Nov-6-2012	195 Summer St	5	5.8
P121119025	Summerside Fire Station 1	Nov-19-2012	251 Foundry Street	6	3.1
P121119023	Bens Bakery Outlet Store	Nov-19-2012	686 Water Street East	7	7.1
P121119019	Wilmot Wellfield Gallery	Nov-19-2012	855 Read Drive	8	7.1
P121205058	Summerside Fire Station 1	Dec-5-2012	251 Foundry Street	6	3.2

Summerside

Guideline to Chemistry Analysis:
All units are parts per million unless otherwise stated
DIS = dissolved

Sample ID	P120509078	P120222028	P120827035	P120827036	P120827037	P121003025	P121003021	P121003022	P121003023
Location	Private Home	Wilmot Well #1	CUP	CUP	CUP	S1 Well	SE4 Well	S10 Well	S7 well
Date	5/9/2012	2/22/2012	8/27/2012	8/27/2012	8/27/2012	Oct-2-2012	Oct-2-2012	Oct-2-2012	Oct-2 2012
Address	96 Balcolm Drive		511 Notre Dame	1 Notre Dame	1 Notre Dame	411 North Market St	26 Briggs	77 Greenwood	123 Walker
City Sample Zone	5	8	4	4	4	6	1	2	3
Alkalinity (ppm of CaCO3)	118	134	131	128	130	172	126	186	159
Chloride	22.2	14.9	85.1	84.5	83.8	154.3	51.3	148.4	143.4
Copper dis	0.11	<0.02	<5ppb	87ppb	44	<5ppb	<5ppb	<5ppb	5ppb
Calcium dis	65.2	68.7	78.1	81.6	80.9	96.3	75.0	106.5	111.5
Cadmium dis	<0.005	<0.005	<2ppb	<2ppb	<2ppb	<2ppb	<2ppb	<2ppb	<2ppb
Chromium dis	<0.05	<0.05	<5ppb	<5ppb	<5ppb	<5ppb	<5ppb	<5ppb	<5ppb
Iron dis	<0.1	<0.10	<9ppb	<9ppb	<9ppb	<9ppb	<9ppb	<9ppb	<9ppb
Potassium dis	0.82	0.67	0.89	0.98	0.93	1.30	0.94	0.93	1.15
Magnesium dis	2.23	1.63	1.68	1.76	1.72	3.22	1.62	2.03	2.88
Manganese dis	<0.02	<0.02	<3ppb	<3ppb	<3ppb	<3ppb	<3ppb	<3ppb	<3ppb
Nickel dis	<0.05	<0.05	<3ppb	<3ppb	<3ppb	<3ppb	<3ppb	<3ppb	<3
Sodium dis	9.6	8.0	29.6	31.0	29.4	44.9	20.6	45.0	43.1
Phosphorus dis	0.02	0.02	0.002	0.03	0.02	<0.02	0.03ppm	0.02	0.02
Lead dis	<0.002	<0.002	<2ppb	<2ppb	<2	<2ppb	<2ppb	<2ppb	<2ppb
Sulfate calc from S dis	11.9	14.8	19.89	19.25	19.59	21.57	20.7	20.13	19.75
Zinc dis	<0.02	<0.02	<6ppb	<6ppb	<6	<6ppb	10ppb	18ppb	6ppb
Barium dis	0.66	0.35	243ppb	241ppb	242	814	275	302	760
pH	7.9	7.8	8.2	8.0	7.9	8.3	8.4	8.2	8.2
Hardness	172	178	202	210.9	209	253.6	193.9	274.3	290.3

Sample ID	P1210030025	P121003026	P121003027	P121106050	P121106051
Location	W2 Well	W3 Well	W4 Well	rkside upstairs	Parkside Downstairs
Date	Oct-2-2012	Oct-2-2012	Oct-2-2012	Nov-6-2012	Nov-6-2012
Address	855 Read	855 Read	855 Read	195 Summer	195 Summer
City Sample Zone	8	8	8	5	5
Alkalinity (ppm of CaCO3)	107	109	109	135	134
Chloride	17.0	17.7	17.4	90.3	88.2
Copper dis	5ppb	<5ppb	<5ppb	81ppb	54ppb
Calcium dis	52.9	53.8	50.53	88.09	86.26
Cadmium dis	<2ppb	<2ppb	<2ppb	<2ppb	<2ppb
Chromium dis	<5ppb	<5ppb	<5ppb	<5ppb	<5ppb
Iron dis	<9ppb	<9ppb	<9ppb	<9ppb	<9ppb
Potassium dis	0.62	0.63	0.60	1.18	1.14
Magnesium dis	1.18	1.20	1.15	2.31	2.20
Manganese dis	<3ppb	<3ppb	<3ppb	<3ppb	<3ppb
Nickel dis	<3ppb	<3ppb	<3ppb	<3ppb	<3ppb
Sodium dis	7.1	7.3	6.9	33.0	31.4
Phosphorus dis	0.02	0.03	0.03	0.02	0.02
Lead dis	<2ppb	<2ppb	<2ppb	<2ppb	<2ppb
Sulfate calc from S dis	14.65	14.41	14.8	19.52	19.56
Zinc dis	<6ppb	<6ppb	<6ppb	57ppb	47
Barium dis	393	396	396	351	342
pH	8.3	8.3	8.3	7.7	7.6
Hardness	137	139.3	130.9	229.6	224.5